

CATHODIC PROTECTION MONITORING

OVERVIEW

Abriox Solid State Relays (SSRs) are available in AC and DC options and are designed for precise interruption of Transformer Rectifiers connected to a buried pipeline. Options for AC or DC SSRs allow the user to choose how the relay is installed on the rectifier, according to preference or policy. The SSR has been designed to be used in the most extreme temperature environments.

When paired with the MERLIN and SUNBIRD range of Transformer Rectifier Remote Monitoring Units (RMUs), they enable remote interruption of the current output for above ground surveys (Close Interval and Direct Current Voltage Gradient), major ON/OFF surveys at test stations and pipeline maintenance work.

MERLIN and SUNBIRD Transformer Rectifier RMUs combined with the SSR offer enhanced interruption patterns up to 60 second ON and OFF.

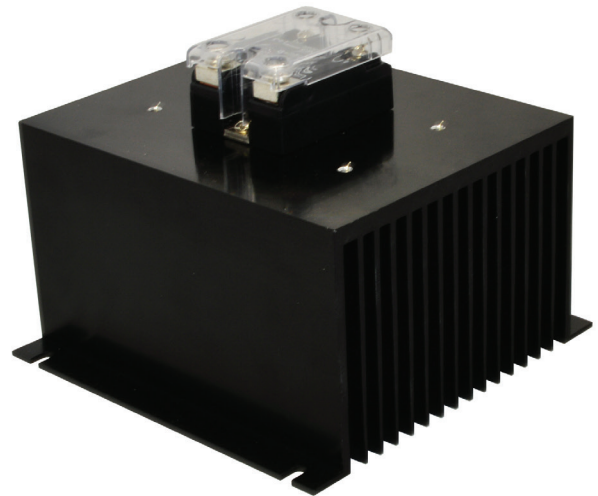
Pairing a MERLIN or SUNBIRD Transformer Rectifier RMU with the DC relay also provides Abriox's PIPELINE LOCATE feature, which allows the SSR to be configured as to allow many popular pipeline location tools to pick up the frequency, configurable up to 1024Hz. Eliminating the need for separate frequency generators to be temporarily installed at rectifier locations, saves a great deal of time and money for the user.

All of these features can be controlled by the iCPM4 software or a cell phone while in the field.

The SSR also allows for installation with a parallel mercury relay for a truly robust, lightning proof solution.

FEATURES AND BENEFITS

- ▶ Compact size for ease of installation
- ▶ AC and DC options for the user
- ▶ Can be used worldwide - unlike mercury relays
- ▶ Designed for use with MERLIN or SUNBIRD Transformer Rectifier RMUs to allow enhanced interruption
- ▶ Precision solid state switching
- ▶ Switches up to 125A AC/100A DC
- ▶ Compatible with all industry recognized Close Interval and DCVG survey patterns
- ▶ DC SSR will output a configurable pipeline locate signal when used with MERLIN or SUNBIRD Excel Transformer Rectifier RMUs



SPECIFICATIONS

DIMENSIONS (H X W X D)

- ▶ DC SSR: 4.39" x 6" x 6"
- ▶ AC SSR: 4.52" x 6" x 6"

TEMPERATURE RANGE

- ▶ -40°F to +185°F

MAXIMUM VOLTAGE

- ▶ DC SSR: 100VDC
- ▶ AC SSR: 280VAC

MAXIMUM CURRENT

- ▶ DC SSR: 100A
- ▶ AC SSR: 125A

COMPLIANCE

- ▶ DC SSR: Certified to UL, CE
- ▶ AC SSR: Certified to UL, CSA, VDE, CE

ABOUT US

Abriox is a dynamic high technology company specializing in remote monitoring and control for pipelines with US Headquarters in Texas and European and International Headquarters in the UK.

GET IN TOUCH

- W www.abriox.com
- E usinfo@abriox.com

SCAN TO FIND OUT MORE

