



# MERLIN

## CATHODIC PROTECTION

### SOLID STATE RELAY

MONITORING AND CONTROL  
FOR OIL AND GAS

#### OVERVIEW

Abriox Solid State Relays are available in AC and DC options and are designed for precise interruption of Transformers Rectifiers connected to a buried pipeline.

Paired with the MERLIN6 range of Transformer Rectifier RMU's, it will enable remote interruption of the current output for above ground surveys (Close Interval and Direct Current Voltage Gradient), major ON/OFF surveys at test stations and pipeline maintenance work.

MERLIN6 combined with SSR offers enhanced interruption patterns up to 60 second ON and OFF. Pairing MERLIN6 with the DC relay provides Abriox's PIPELINE LOCATE feature, which allows the SSR to be configured as to allow many popular pipeline location tools to pick up the frequency, configurable up to 1024Hz, eliminating the need for separate frequency generators to be temporarily installed at rectifier locations, saving a great deal of time and money for the user.

All of these features can be controlled by the iCPSM4 software or a cell phone while in the field.

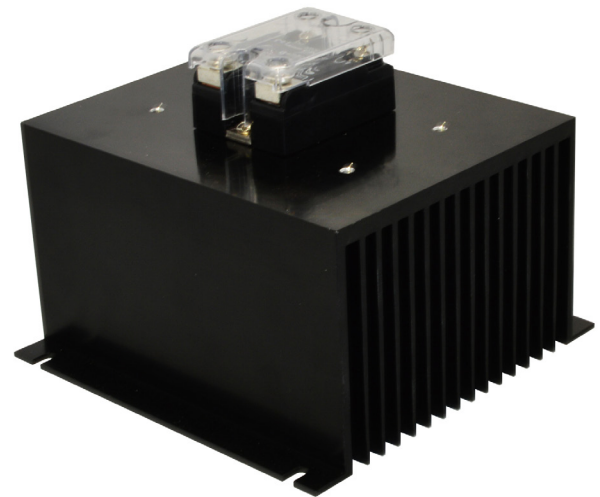
The SSR allows for installation with a parallel mercury relay for a truly robust, lightning proof solution.

Options for AC or DC SSRs allow the user to choose how the relay is installed on the rectifier, according to preference or policy.

The SSR can be used effectively in the most extreme temperature environment.

#### FEATURES AND BENEFITS

- ▶ Compact size for ease of installation
- ▶ AC and DC options for the user
- ▶ Can be used worldwide - unlike mercury relays
- ▶ Designed for use with MERLIN6 to allow enhanced interruption
- ▶ Precision solid state switching
- ▶ Switches up to 125A AC/100A DC
- ▶ Compatible with all industry recognized Close Interval and DCVG survey patterns
- ▶ MERLIN DC SSR will output a configurable pipeline locate signal when used with MERLIN6 Excel Transformer Rectifier RMU



#### SPECIFICATIONS

##### DIMENSIONS (H x W x D)

- ▶ MERLIN DC SSR: 4.39" x 6" x 6"
- ▶ MERLIN AC SSR: 4.52" x 6" x 6"

##### TEMPERATURE RANGE

- ▶ -40°F to +185°F

##### MAXIMUM VOLTAGE

- ▶ MERLIN DC SSR: 100VDC
- ▶ MERLIN AC SSR: 280VAC

##### MAXIMUM CURRENT

- ▶ MERLIN DC SSR: 100A
- ▶ MERLIN AC SSR: 125A

##### COMPLIANCE

- ▶ MERLIN DC SSR: Certified to UL, CE
- ▶ MERLIN AC SSR: Certified to UL, CSA, VDE, CE

#### ABOUT US

Abriox is a dynamic high technology company specializing in remote monitoring and control for pipelines with US Headquarters in Ohio and European and International Headquarters in the UK.

#### GET IN TOUCH

[www.abriox.com](http://www.abriox.com)  
[usinfo@abriox.com](mailto:usinfo@abriox.com)

SCAN TO FIND OUT MORE